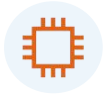


# FD511GS-X-RM10

## 1GE XPON ONU



High Speed CPU



Low Power Consumption



Software Customization



Optional Shell Supply

### Brief Views

FD511GS-X-RM10 is a dual-mode stick ONT packaged by SFP, which integrates the PON MAC function of the ONU. The module ONU can be plugged into the designated main device, such as switches, IP cameras, Small Cells, routers, DSLAMs, or other devices, so that they have the GPON or EPON uplink interface, thus transforming the original network into a GPON or EPON network, which can reduce the difficulty and cost of the network transformation.

## Functional Feature

- Fully compatible with ITU-T G.984.1/2/3/4 and IEEE802.3ah standard
- The product is small in size and light in weight
- Support LOID authentication mode
- Support dying Gasp function
- Support optical link diagnostic function
- Support restoring factory function
- Support IEEE802.1Q protocol
- Support different VLAN mode (transparent, tag, translate, and trunk)

## Hardware

### ● GPON/EPON Port

- single fiber
- GPON: FSAN G.984.2 standard
- EPON: 1000BASE-PX20+ symmetric
- GPON: 2.488Gbps/1.244Gbps downstream/upstream
- EPON: 1.25Gbps downstream/upstream
- Wavelength :  
Transmit: 1310nm    Receiver: 1490nm
- Receiving sensitivity :  
GPON: -28dBm    EPON: -27dBm
- Saturated power :  
GPON: -8dBm    EPON: -3dBm
- Transmitting power :  
GPON: 0.5~5dBm    EPON:0~4dBm

### ● Power

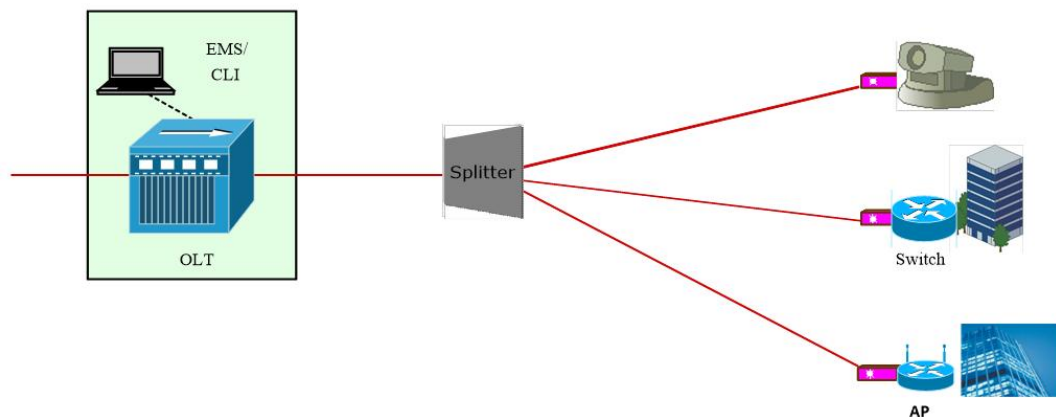
- Power consumption: <2W

### ● Environmental Specifications

- Operating temperature: 0 to 40° C
- Storage temperature: -40 to 85° C
- Operating humidity: 10% to 90%(Non-condensing)

## Application

- Solution: FTTB/N
- Business: Broadband Internet, Camera



## Ordering Information

Product Name	Product Model	Descriptions
XPON Stick ONU	FD511GS-X-RM10	XPON stick SFP modules,one PON optical interface, SC/UPC receptacle connector , TX 1310nm , RX 1490nm , 20Km, Mini GBIC interface
XPON Stick ONU	FD511GS-X-RM11	XPON stick SFP modules,one PON optical interface, SC/APC receptacle connector , TX 1310nm , RX 1490nm , 20Km, Mini GBIC interface